

# State of Wyoming Corner Record

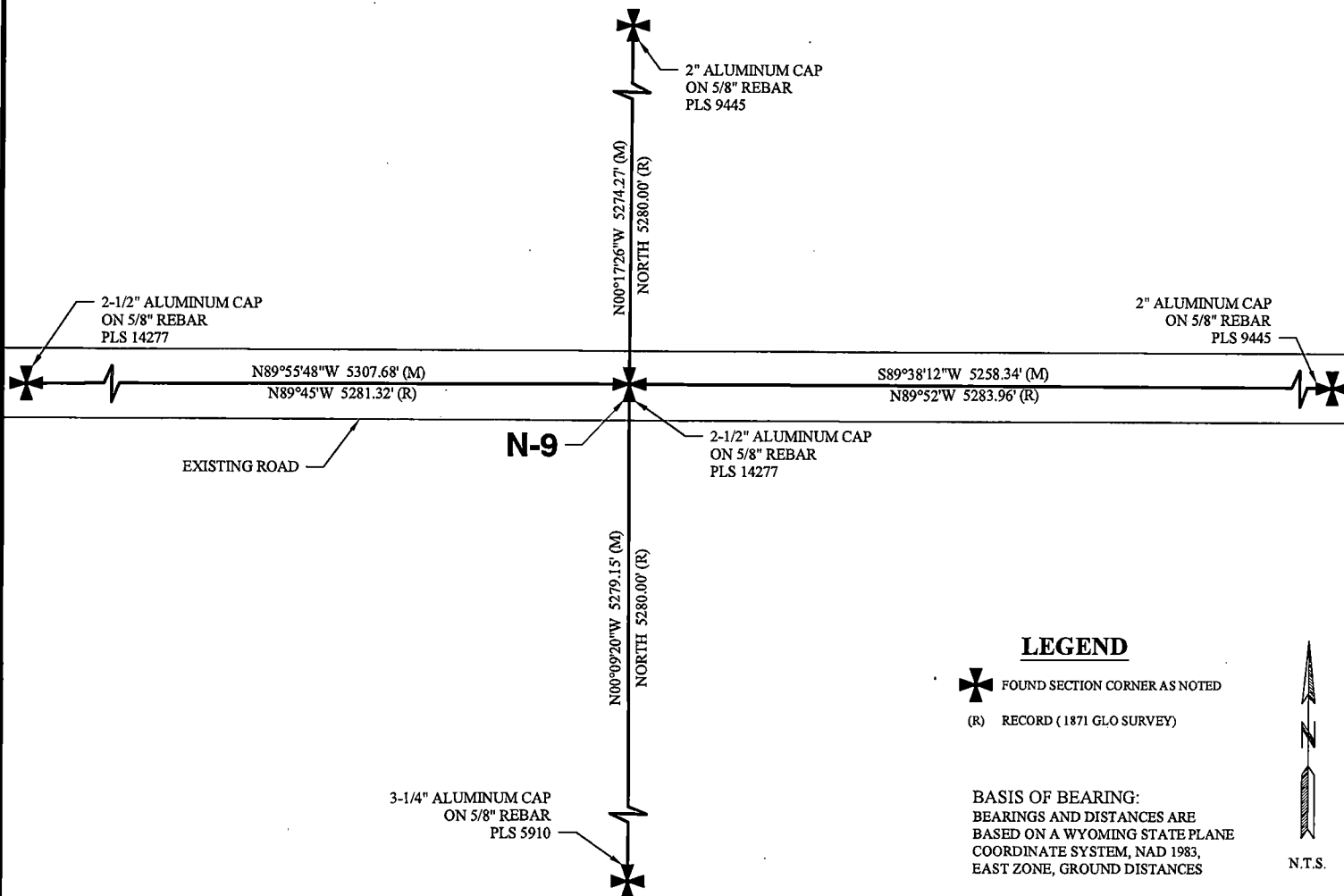
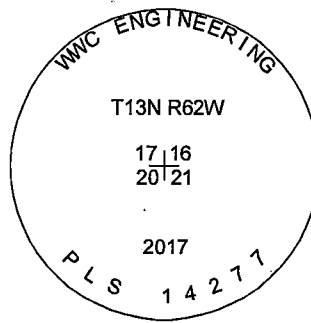
(In compliance with the CORNER PERPETUATION AND FILING ACT, Wyoming Statutes, 1997, Section 33-29-140, et seq., and the Rules and Regulations of the Board of Registration for Professional Engineers and Professional Land Surveyors)

Reverse side of this form may be used if more space is needed.

Record of original survey and citation of source of historical information (if corner is lost or obliterated.) Description of corner monumentation evidence found and/or monument and accessories established to perpetuate the location of this corner. Sketch of relative location of monument, accessories, and reference points with course and distance to adjacent corner(s) (if determined in this survey). Method and rationale for reestablishment of lost or obliterated corner.

**EVIDENCE RECORD:** 1871 GLO Survey: North between sections 20 & 21, 80.00 chains. Set sand stone 18"x12"x6" for corner to sections 16, 17, 20 and 21.

**EVIDENCE FOUND:** June 2017: Sand stone from 1871 GLO Survey not found. Found a nail set below road surface at intersection of east-west road and north-south crop lines. Set a 2 1/2" aluminum cap marked as shown on a 5/8" rebar, 30" long, 6" below gravel road surface at found position of nail for corner of sections 16, 17, 20 and 21.



Date of Field Work: June 08, 2017

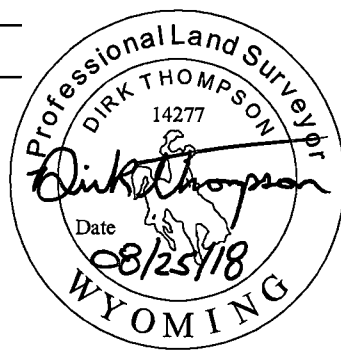
Office Reference: 2017-135

## CROSS INDEX DIAGRAM

	1	2	3	4	5	6	7	8	9	10	11	12	13	14	15	16	17	18	19	20	21	22	23	24	25
A																									
B																									
C		6																							
D																									
E																									
F																									
G		7																							
H																									
J																									
K																									
L		18																							
M																									
N																									
O																									
P		19																							
Q																									
R																									
S																									
T		30																							
U																									
V																									
W																									
X		31																							
Y																									
Z																									

Land Surveyor / Firm / Address  
Dirk Thompson  
WWC Engineering  
1849 Terra Avenue  
Sheridan, WY 82801  
 Telephone: (307) 672-0761

This corner record was prepared by me or under my direction and supervision.  
 SEAL & SIGNATURE



RECP #: 739883  
 RECORDED 10/1/2018 AT 1:32 PM BK# 2598 PG# 317  
 Debra K. Lee, CLERK OF LARAMIE COUNTY, WY PAGE 1 OF 1

Corner Name: Northeast Corner Section: 20 T 13N R 62W ; 6TH P.M. Cross-Index No.: N-9  
 SBRPEPLS/PLSW: March 1994; PLSW January 1998